

## Key Features

### High-Performance

- Up to 800 Gbps, 600 Mpps
- Hardware based layer 2/3/4 switching
- 1/10GBASE-T auto-negotiating

### Investment Protection

- Deploy as 1000BASE-T today
- Enable 10GBASE-T when ready
- Leverage existing cabling plants

### Arista Extensible Operating System

- Supports virtualized environments
- Customizable to customer needs
- Access to Linux tools

### High Software Reliability

- Fine-grained software modularity
- Health monitoring and self-healing
- In-service-software upgrades (ISSU)

### High Hardware Availability

- Redundant hot-swappable power
- Redundant hot-swappable fans
- Redundant management ports

### Flexible Airflow/Mounting Options

- Front-to-rear or rear-to-front fan options
- Hot or cold aisle port facing options

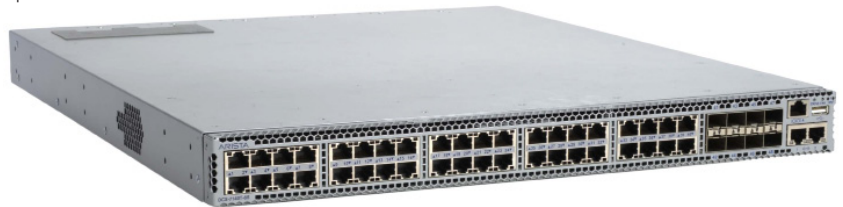
### Full Range of SFP+ Uplink Options

- 10GBASE-X optical PHYs
- 10GBASE-CR copper cables
- 1000BASE-X optical PHYs
- 1000BASE-T copper PHY

## Overview

The Arista 7100 Series is a family of high performance, low latency, layer 2/3/4, 1/10 Gigabit Ethernet data center switches. The latest series additions, the Arista 7100T switches, include 24 and 48-port models with auto-negotiating 1/10GBASE-T ports with standard RJ-45 connectors and SFP+ uplink ports. The 7100T switches support redundant, hot-swappable power and cooling in 1RU and offer front-to-rear airflow when mounted in either direction. Positioned for data center server access, the 7100T switches offer backwards compatibility with standard Gigabit Ethernet cabling and investment protection as customers migrate from Gigabit to 10 Gigabit Ethernet.

The Arista 7100T switches support 10GBASE-T over Category 6a and 7 cabling up to 100m, but also support Category 5e\* and Category 6 cabling with distances up to 55m. This allows for investment protection with existing cabling plants.



Arista 7140T-8S: 40-port 1/10GBASE-T (RJ-45) + 8 SFP+, 800 Gbps, 600 Mpps, L2/3/4



Arista 7120T-4S: 20-port 1/10GBASE-T (RJ-45) + 4 SFP+, 480 Gbps, 360 Mpps, L2/3/4

## Arista EOS™

The Arista 7100 Series runs Arista EOS™, a data center-class operating system with a modular protected memory architecture that ensures the highest levels of reliability and availability. Each process is monitored and restarted automatically in response to failure, while in-service software upgrades (ISSU) allow individual software components to be updated without disrupting system operation. Arista EOS automates the networking infrastructure natively with VMware vSphere via VM Tracer to provide VM discovery, auto-VLAN provisioning, and unprecedented visibility into the virtual computing environment.

\* Performance of 10GBASE-T over Cat-5e cabling is not specified in the standard and thus cannot be guaranteed. Field testing is recommended before deployment to establish the feasibility of using existing Cat-5e cabling.

## Layer 2 Feature Set

- 16K L2 Forwarding Entries
- 802.1w Rapid Spanning Tree
- 802.1s Multiple Spanning Tree Protocol
- RPVST+
- 802.3ad Link Aggregation/LACP
  - 16 ports/channel
  - 256 groups per system
- MLAG- Multi-Chassis Link Aggregation
- 802.1Q VLANs/Trunking
  - 4094 VLANs
  - 150K VLAN Ports
- 802.1AB Link Layer Discovery Protocol
- Traffic Mirroring (mirror port or LAG)
- Jumbo Frames (9216 Bytes)
- 802.3x PAUSE
- Layer 2 Access Lists
- Q-in-Q
- IGMP Snooping v 2

## Layer 3 Feature Set

- 16K IPv4 Routes
- 4K IPv6 Routes\*
- Static Routes
- OSPF
- BGP
- VRRP
- ECMP - Equal Cost Multipath Routing
- PIM-SM
- Virtual ARP (VARP)

## VM Tracer Feature Set

- VMware vSphere support
- VM Auto Discovery
- VM Adaptive Segmentation
- VM Host View
- VMware ESX Port Profile
- VM Tracer Multi-Tenancy

## Network Management

- SNMP v2, v3
- Management over IPv6
- Syslog
- RADIUS / TACACS+
- AAA
- Network Time Protocol (NTP)
- File download via SCP, HTTP, HTTPS, FTP & TFTP Client
- Familiar Industry Standard CLI

## IEEE Compliance

- 802.1D Bridging and Spanning Tree
- 802.1p QOS/COS
- 802.3ab 1000BASE-T
- 802.3z Gigabit Ethernet
- 802.3ae 10 Gigabit Ethernet

## Model Comparison

|   | 7120T-4S      | 7140T-8S      |
|---|---------------|---------------|
| 1/10GBASE-T (RJ-45) Ports               | 20            | 40            |
| SFP/SFP+ Uplink Ports                   | 4             | 8             |
| Throughput                              | 480 Gbps      | 800 Gbps      |
| Packets/Second                          | 360 Mpps      | 600 Mpps      |
| Latency                                 | 2.5 usec      | 2.9 usec      |
| CPU                                     | X86 Dual-Core | X86 Dual-Core |
| Flash Memory                            | 2GB           | 2GB           |
| Main Memory                             | 2GB           | 2GB           |
| 10/100/1000 Management Ports            | 2             | 2             |
| RS-232 Serial Ports                     | 1             | 1             |
| USB Port                                | 1             | 1             |
| 1+1 PSU Redundancy                      | Yes           | Yes           |
| Hot Swappable PSUs                      | Yes           | Yes           |
| Hot Swappable Fans                      | Yes           | Yes           |
| Reversible Airflow Option               | Yes           | Yes           |
| 10GBASE-T over Category 6a or 7 Cabling | up to 100m    | up to 100m    |
| 10GBASE-T over Category 5e or 6 Cabling | up to 55m**   | up to 55m**   |
| Typical Power Draw                      | 288 watts     | 585 watts     |

## Supported SFP Optics and Copper Media

| Interface Type | Media             | Max Distance |
|----------------|-------------------|--------------|
| 10GBASE-CR     | Twinax Copper     | 7m           |
| 10GBASE-SRL    | 50 micron MMF     | 100m         |
| 10GBASE-SR     | 50 micron MMF     | 300m         |
| 10GBASE-LRM    | 62.5 micron MMF   | 220m         |
| 10GBASE-LR     | 9 micron SMF      | 10km         |
| 10GBASE-ER     | 9 micron SMF      | 40km         |
| 1000BASE-SX    | 50 micron MMF     | 550m         |
| 1000BASE-LX    | 9 micron SMF      | 10km         |
| 1000BASE-T     | Category 5 Copper | 100m         |

## Quality of Service

- 8 queues per port
- 802.1p Based Classification
- Strict Priority Queueing
- Per-Priority Flow Control (PFC)
- Data Center Bridging Exchange (DCBX)

## Environmental Characteristics

- Operating Temperature 0 to 40C
- Storage Temperature -40 to 70C
- Relative Humidity 5 to 95%
- Operating Altitude 0-10,000 ft

## Power Specifications

- Max Output Power: 760W
- Input Voltage Range: 100-240VAC
- Input Current (max): 4-8A
- Input Frequency: 50-60 Hz
- Input Connector: IEC 320-C13

## Security

- IP Access Lists (per-port)
- MAC Security
- Control Plane Protection (CPP)
- IP Control Plane Access Lists
- SSHv2

## Physical Characteristics

- Size HxWxD: 1.74 x 17.4 x 20.25" (44 x 440 x 515mm)
- Weight : 7120T-4S 26 lbs (11.8kg)  
7140T-8S: 29 lbs (13.2kg)

## Standards Compliance

- EMI: FCC Part 15 Class A  
ICES-003 Class A  
VCCI Class A
- Safety: IEC/UL/CSA/EN 60950  
CE, UL, TUV Mark
- Other: ROHS-5 compliant

\* Supported in a future software release

\*\* Performance of 10GBASE-T over Cat-5e cabling is not specified in the standard and thus cannot be guaranteed. Field testing is recommended before deployment to establish the feasibility of using existing Cat-5e cabling.

For more information, visit [www.aristanetworks.com](http://www.aristanetworks.com)