

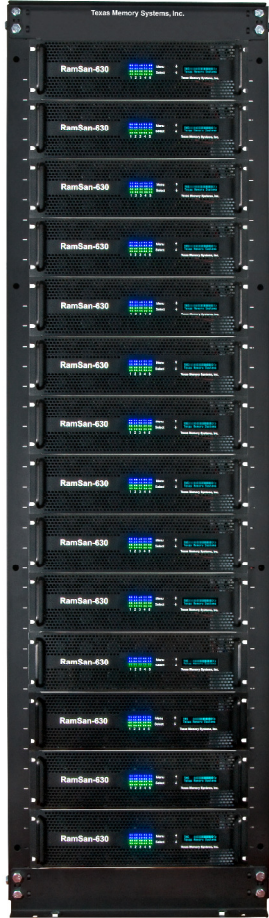


RamSan[®] Systems

from Texas Memory Systems

RamSan-6300

SLC Flash
140 TB (42U)
14M IOPS
140 GB/s
140 I/O ports

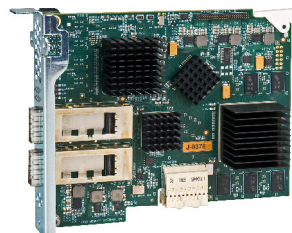


RamSan-630

SLC Flash
10 TB (3U)
1M IOPS
10 GB/s
10 I/O ports



Flash Board



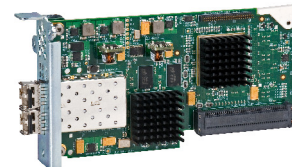
InfiniBand Card

RamSan-620

SLC Flash
5 TB (2U)
250K IOPS
3 GB/s
8 I/O ports



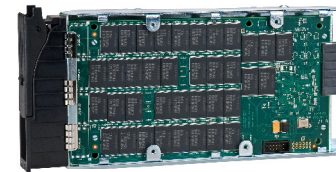
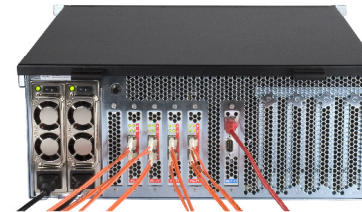
Flash Board



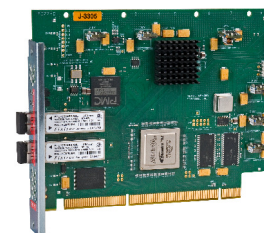
Fibre Channel Card

RamSan-500

SLC Flash
2 TB (4U)
100K IOPS
2 GB/s
8 I/O ports



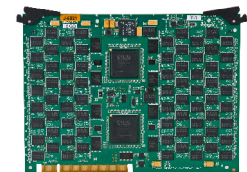
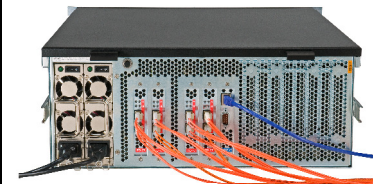
Flash Module



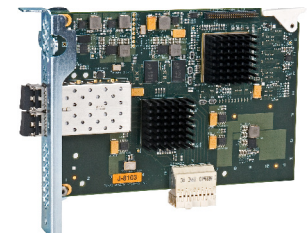
Fibre Channel Card

RamSan-440

DDR RAM
512 GB (4U)
600K IOPS
4.5 GB/s
8 I/O ports



RAM Board



Fibre Channel Card